

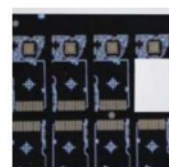
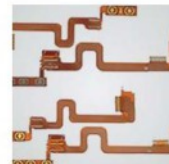
Inline Laser Marking Machine



Features:

- Prints 1D, 2D, text and graphics
- Resolution of μm , to meet the requirements of ultra-high-precision engraving
- Very small text heights can be achieved—0.03mm
- Fastest engraving speed in the industry, two times faster than conventional products
- 30W high power output, higher than the average product 2.5times
- The device comes with smoke detection
- High-power purification device
- Safety door design, work process closed, to prevent pollution of the working environment
- Optional built-in flap device
- Extremely long life of the laser source: 87600hours

Codes Samples:



Spec. of CO2 Laser:

Laser Type		Co2, 5W/10W, Forced Air Cooling
Laser Wavelength		10.64μm
Laser Class		Class 4
Laser Spot Size		0.11mm
Engraving Area		55×55mm Per Position
Type of Engraving	Type of Text	English uppercase, English lowercase, numbers, words, symbols, etc.
	Barcode	CODE39、CODE128、ITF、NW-7、JAN(EAN)/UPC
	2D Code	QR Code, Micro QR Code, iQR Code, Data Matrix, GS1 Data Matrix
	Graphical Data	DXF、BMP、HPGL、JPEG、AI、EPS

Spec. of UV Laser:

Laser Type		UV, 3W/5W, Forced Air Cooling
Laser Wavelength		355nm
Laser Class		Class 4
Laser Spot Size		0.04mm
Engraving Area		50×50 / 70×70mm Per Position
Type of Engraving	Type of Text	English uppercase, English lowercase, numbers, words, symbols, etc.
	Barcode	CODE39、CODE128、ITF、NW-7、JAN(EAN)/UPC
	2D Code	QR Code, Micro QR Code, iQR Code, Data Matrix, GS1 Data Matrix
	Graphical Data	DXF、BMP、HPGL、JPEG、AI、EPS

Spec. of Fiber Laser:

Laser Type		Fiber, 30W, Forced Air Cooling
Laser Wavelength		1.06μm
Laser Class		Class 4
Laser Spot Size		0.047mm
Engraving Area		99×99mm Per Position
Type of Engraving	Type of Text	English uppercase, English lowercase, numbers, words, symbols, etc.

	Barcode	CODE39、CODE128、ITF、NW-7、JAN(EAN)/UPC、RSS-14
	2D Code	QR Code, Micro QR Code, iQR Code, Data Matrix, GS1 Data Matrix
	Graphical Data	DXF、BMP、HPGL、JPEG、AI、EPS

Specifications:

Model		S350	S450	S510
PCB Size		50*50 ~ 350*350 mm	50*50 ~ 450*450 mm	50*50 ~ 510*510 mm
Applications		PCB, resin, FPC flexible boards, rigid-flexible boards, thin multilayer boards, ceramics, glass, metal materials, IC chips, etc.		
Marking Method		Single-head, single-sided marking	Single-head reversible double-sided marking	Double-head upper and lower double-sided marking
PCB Clearance		Up: 30mm, Down: 30mm		
PCB Thickness		0.6~6mm		
Direction		L-L; R-L; L-L; R-R		
Number of Tracks		Single lane (can option dual lane)		
Height		900 ± 20mm		
Laser Head Quantity		1	1	2
Laser head spec.	Type	CO (5W/10W); UV (3W /5W); Fiber (20W/100W)		
	3D Marking	Support (option)		
	Laser Spot Size	CO2: 0.1mm; UV: 0.04mm; Fiber: 5.7-8mm		
	Cooling Way	Air Cooling		
	Laser Wavelength	CO2: 10.64 μm/ UV purple: 355nm/ UV green: 532nm/ Fiber: 1064nm		
	Marking Area	50*50 ~120*120 mm (Depending on the laser marking head configuration)		
	Laser Class	Class 4		
Type of marking	Type of text	English, numbers, text, symbols, support TrueType fonts, SHX fonts, etc.		
	Barcodes	Code 39; Code 128; Code 93; ITF; NW-7; EAN-13; EAN-8; ISBN, etc.		
	2D code	QR Code; Micro QR Code; DM Code; GS1 Data Matrix; PDF 417, etc.		
	Image data	DXF; BMP; HPGL; JPEG; AI; EPS		
2D Code Size		0.5*0.5 ~ 30*30 mm (Minimum 2D code based on laser engraving head configuration)		
Marking Position Accuracy		±0.04mm		
Engraving and scanning speed		Max.: 6000~12000 mm/S (Depending on the laser engraving head configuration)		
Repeat Positioning Accuracy		±0.02mm		
OS		WIN 10		
Software Language		Chinese/English/Traditional Chinese		
Programming Method		PCB whole board scanning and splicing; Wizard visualization programming		
Smoke Alarm System		PM 2.5 smoke and dust alarm system		



INTEON CORPORATION LIMITED

Vision System	Optical high-precision positioning; visual anti-deactivation; real-time code-reading inspection (optional)		
Power Supply	AC 220V, 50/60Hz		
Power	2KW	2.2KW	
Air Pressure	≥ 0.5 Mpa		
Environmental Requirements	5~40℃； 30% ~80% Rh		
Machine Size	800*1300*1600 mm	1100*1500*1600 mm	1100*1500*1600 mm
Weight	750kgs	800kgs	1000kgs
Communication Method	Standard SMEMA interface		
Data Interface	Supports MES, CIM, DataBase, etc. as well as customer-defined protocols; automatically obtains work order and coding information, etc.		
Data Transmission Protocol	HSMS, Webservice, Http, etc. and client-defined protocols		